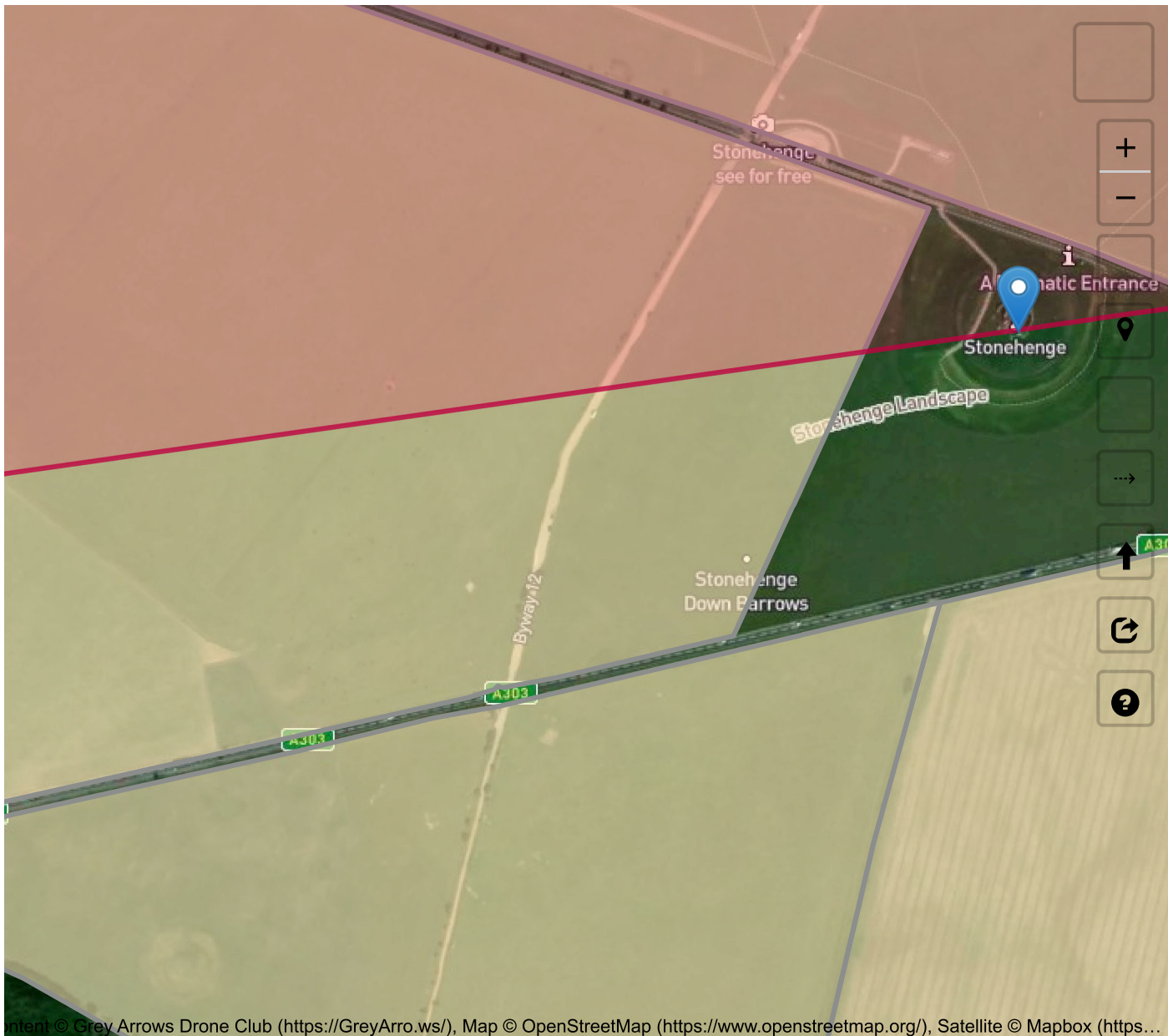


### Where to fly your drone

- All Regions ▼
- All Categories ▼
- All Permissions ▼
- All Members ▼

Filter



## Recently added locations

**Bruar Woods (/where-to-fly-drone/bruar-woods/scotland/3354)** (By AlbionDrones (/?filter=true&region=0&category=0&permission=0&member=205bceab-422e-11ed-a32a-001ddab71d20))



(/where-to-fly-drone/bruar-woods/scotland/3354) Park at House of Bruar and follow the path towards the falls, turn off before reaching the first bridge for some stunning woodland for a flight

Land owner permission requirements unknown.

View and discuss this location on Grey Arrows (<https://GreyArro.ws/t/bruar-woods-added-to-forests-and-trees-in-scotland/77987>).

Co-ordinates: 56.77269, -3.932415 (<https://www.google.com/maps/search/?api=1&query=56.77269,-3.932415>) • what3words: ///care.forgives.farmed (<https://what3words.com/care.forgives.farmed?maptype=satellite>)

**Holbeck - Scarborough Southbay (/where-to-fly-drone/holbeck---scarborough-southbay/yorkshire-and-the-humber/3352)** (By Paul01 (/?filter=true&region=0&category=0&permission=0&member=375e1066-0615-11ef-a6bc-00505603891d))



(/where-to-fly-drone/holbeck---scarborough-southbay/yorkshire-and-the-humber/3352) Great view of Scarborough Southbay from the land formation made when the Holbeck was destroyed in a landslide.

Free parking all year round :-)

Land owner permission requirements unknown.

View and discuss this location on Grey Arrows (<https://GreyArro.ws/t/holbeck-scarborough-southbay-added-to-coastal-scenery-in-yorkshire-and-the-humber/77966>).

Co-ordinates: 54.26871, -0.390396 (<https://www.google.com/maps/search/?api=1&query=54.26871,-0.390396>) • what3words: ///fact.chins.scared (<https://what3words.com/fact.chins.scared?maptype=satellite>)

## Tilehurst Water Tower (/where-to-fly-drone/tilehurst-water-tower/south-

**east/3351)** (By apreading (/?filter=true&region=0&category=0&permission=0&member=11d98050-f3a9-11ee-a6bc-00505603891d))



(/where-to-fly-drone/tilehurst-water-tower/south-

**east/3351)** Erected in 1932, Tilehurst Water Tower, is an iconic landmark on the ridge line in Tilehurst, a district in the Western part of Reading. People from Reading know they are near home when they are coming along the M4 from the West and they can see the top of the tower, several miles before they get to Junction 12.

In November 2018 the tower was illuminated in poppy red to mark 100 years since the end of the First World War. The tower remained illuminated, and visible at night from a wide area, until Remembrance Day on 11 November.

It still fulfils its function as a water tower today, and at the top it also houses a number of telephone masts and receivers and also the transmitter for Greatest Hits Radio Berkshire & North Hampshire, a local radio station.

The tower holds a huge 900,000 litres of water, in two 4.5 metre deep tanks and provides around 10 per cent all the water used in Reading, serving 12,000 homes and businesses.

Land owner permission not required.

View and discuss this location on Grey Arrows (<https://GreyArro.ws/t/tilehurst-water-tower-added-to-historic-buildings-in-south-east/77937>).

Co-ordinates: 51.45163, -1.047077 (<https://www.google.com/maps/search/?api=1&query=51.45163,-1.047077>) • what3words: [///knee.pose.sand](https://what3words.com/knee.pose.sand) (<https://what3words.com/knee.pose.sand?maptype=satellite>)

## Deangate Ridge Country Park (/where-to-fly-drone/deangate-ridge-country-

**park/south-east/3350)** (By RestlessZombi (/?

filter=true&region=0&category=0&permission=0&member=7e0da9fe-078c-11ee-9be2-001ddab71d20))



(/where-to-fly-drone/deangate-ridge-country-park/south-east/3350) This has been the site of many Drone Meetups. Camera Drones, FPV Drones and Fixed Wings have been flown around this area without issue.

Often used by Dog Walkers.

Security Guard is happy with Drones being flown and likes biscuits.

Park in the Car Park for free and walk to site.

Land owner permission not required.

View and discuss this location on Grey Arrows (<https://GreyArro.ws/t/deangate-ridge-country-park-added-to-fpv-in-south-east/77934>).

Co-ordinates: 51.43191, 0.547509 (<https://www.google.com/maps/search/?api=1&query=51.43191,0.547509>) • what3words: [///skillet.example.forgiven](https://what3words.com/skillet.example.forgiven) (<https://what3words.com/skillet.example.forgiven?maptype=satellite>)

## Scar House Reservoir (/where-to-fly-drone/scar-house-reservoir/yorkshire-and-the-humber/3349) (By Sleepwalker (/?

[filter=true&region=0&category=0&permission=0&member=5dab6d1a-c994-11ee-a6bc-00505603891d](https://www.greearrows.com/t/scar-house-reservoir-added-to-areas-of-outstanding-natural-beauty-in-yorkshire-and-the-humber/77930))



(/where-to-fly-drone/scar-house-reservoir/yorkshire-and-the-humber/3349) Its a free carpark only about 5 mins away from the first dam if you stick to the left its foot path to the second dam but if you dont mind hiking and have appropriate footwear then you can do a full circle around the reservoir

Land owner permission requirements unknown.

View and discuss this location on Grey Arrows (<https://GreyArro.ws/t/scar-house-reservoir-added-to-areas-of-outstanding-natural-beauty-in-yorkshire-and-the-humber/77930>).

Co-ordinates: 54.1877, -1.907498 (<https://www.google.com/maps/search/?api=1&query=54.1877,-1.907498>) • what3words: [///wreck.multiply.recipient](https://what3words.com/wreck.multiply.recipient) (<https://what3words.com/wreck.multiply.recipient?maptype=satellite>)

## Rhosydd Quarry (/where-to-fly-drone/rhosydd-quarry/wales/3348) (By Dren (/?

[filter=true&region=0&category=0&permission=0&member=430b8131-4530-11ec-9d48-001ddab71d20](https://www.greearrows.com/t/rhosydd-quarry-added-to-areas-of-outstanding-natural-beauty-in-wales/77930))



### (/where-to-fly-drone/rhosydd-

quarry/wales/3348) Rather wet, muddy walk upto Rhosydd quarry from the Llyn Cwmorthin lake below. Carpark is situated just outside Tanygrisiau, steep narrow roads upto carpark. Gives you an idea of the paths elevation upto plateau. You can fly anywhere here there are no restrictions in the area. Old slate buildings and ruins

everywhere

Land owner permission not required.

View and discuss this location on Grey Arrows (<https://GreyArro.ws/t/rhosydd-quarry-added-to-iconic-landscapes-and-ancient-sites-in-wales/77894>).

Co-ordinates: 53.00009, -3.978918 (<https://www.google.com/maps/search/?api=1&query=53.00009,-3.978918>) • what3words: [///womanly.holly.momentous](https://what3words.com/womanly.holly.momentous) (<https://what3words.com/womanly.holly.momentous?maptype=satellite>)

### **Rottingdean (Undercliff Walk) (/where-to-fly-drone/rottingdean-undercliff-walk/south-east/3347)** (By Markm0 (/?

filter=true&region=0&category=0&permission=0&member=27c68630-035d-11ed-a32a-001ddab71d20))



### (/where-to-fly-drone/rottingdean-undercliff-

walk/south-east/3347) You can park in the Marine Cliffs pay and display carpark.

Land owner permission requirements unknown.

View and discuss this location on Grey Arrows

(<https://GreyArro.ws/t/rottingdean-undercliff-walk-added-to-beaches-and-seaside-resorts-in-south-east/77861>).

Co-ordinates: 50.80204, -0.055248 (<https://www.google.com/maps/search/?api=1&query=50.80204,-0.055248>) • what3words: [///butter.spud.takeover](https://what3words.com/butter.spud.takeover) (<https://what3words.com/butter.spud.takeover?maptype=satellite>)

### **Kelsey Park Beckenham (/where-to-fly-drone/kelsey-park-beckenham/london/3346)** (By grandad1950 (/?

filter=true&region=0&category=0&permission=0&member=af1d2346-1e28-11ed-a32a-001ddab71d20))





### (/where-to-fly-drone/kelsey-park-

beckenham/london/3346)A local nature reserve with lots of water fowl and birds to enjoy. Well manicured gardens, Ideal for a relaxing short break

Land owner permission requirements unknown.

View and discuss this location on Grey Arrows (<https://GreyArro.ws/t/kelsey-park-beckenham-added-to-parks-and-recreation-in-london/77854>).

Co-ordinates: 51.40097, -0.021998 (<https://www.google.com/maps/search/?api=1&query=51.40097,-0.021998>) • what3words: ///dome.clips.jazzy (<https://what3words.com/dome.clips.jazzy?maptype=satellite>)

### Portmeirion (/where-to-fly-drone/portmeirion/wales/3345) (By Dren (/?

filter=true&region=0&category=0&permission=0&member=430b8131-4530-11ec-9d48-001ddab71d20))



(/where-to-fly-drone/portmeirion/wales/3345)Parked in carpark, walking through village and beyond lighthouse towards beach, follow gravel path to steps leading down to Sandy beach. Able to TOAL from estuary whilst tide was out. Quick flight upto village keeping my distance due to weight of drone.

Drone scene check before flight showed no warnings

Land owner permission requirements unknown.

View and discuss this location on Grey Arrows (<https://GreyArro.ws/t/portmeirion-added-to-beaches-and-seaside-resorts-in-wales/77820>).

Co-ordinates: 52.90978, -4.101055 (<https://www.google.com/maps/search/?api=1&query=52.90978,-4.101055>) • what3words: ///young.carefully.massaging (<https://what3words.com/young.carefully.massaging?maptype=satellite>)

### Inverness Locks (/where-to-fly-drone/inverness-locks/scotland/3344) (By

Bfarrell (/?filter=true&region=0&category=0&permission=0&member=6b276cac-0254-11ef-a6bc-00505603891d))



(/where-to-fly-drone/inverness-locks/scotland/3344)Another wee fly about at night getting used to the drone.

Nice calm night

Land owner permission not required.

View and discuss this location on Grey Arrows (<https://GreyArro.ws/t/inverness-locks-added-to-coastal-scenery-in-scotland/77801>).

Co-ordinates: 57.48257, -4.247438 (<https://www.google.com/maps/search/?api=1&query=57.48257,-4.247438>) • what3words: ///universally.daring.locals (<https://what3words.com/universally.daring.locals?maptype=satellite>)

Show All Locations (/?showall=true)

Service provided by



(<https://GreyArro.ws/>)

© 2024 - Grey Arrows Drone Club (<https://GreyArro.ws/>) · Terms (<https://greyarro.ws/tos>) · Privacy (<https://greyarro.ws/privacy>) · Contact (<https://greyarro.ws/faq#contactus>)